



**Putzmeister**



# 51Z-5 Meter Truck-mounted concrete pump

A robust, versatile and economical workhorse

# The NEW 51Z-5

## Built to last for the most demanding jobs

### Meet the newest member of the Putzmeister fleet

The 51Z-5 combines proven components with the latest developments to reduce operating costs, increase operator safety and offer flexibility to meet your customers' jobsite needs.

#### Robust

- Heavy duty design for the most demanding jobs
- Most durable core pump and wear parts
- Simplified operation and service

#### Economical

- Up to 25% reduced fuel consumption with Ergonic Output Control (EOC) 2.0
- Intuitive control with new remote designed for operators, by operators
- TCO (total cost of ownership) is not about price — it's about parts quality, durability, service cycles, efficiency in all drive systems and exceptional support

#### Versatile

- Multi-story buildings, huge foundation work or piling application
- Optional piling tip section makes this heavy duty machine ideal for piling work with up to 15,040 lbs (700 kg) boom tip load
- 5 arms with compact RZ folding results in low unfolding height and best slip characteristics
- User-friendly Putzmeister boom kinematics offer no dead spots
- Narrow support width for a 50Z class machine including one side support option

### The Putzmeister promise

The name Putzmeister stands for machines that enable you to work with extraordinary productivity and compete at a higher level. To this end, we provide innovative technologies alongside top quality and excellent service.

We recognized the importance of your job, which is why Putzmeister employees are dedicated to supporting you both around the clock and around the world.

#### Your Putzmeister Team

### Get closer to the action with less space requirement

Keep your setup times as short as possible with the TRDI support developed by Putzmeister. You save time and space without compromising safety.

Double telescoping support legs can be securely placed in minimal spaces between obstacles. Thanks to the optional One Side Support (OSS\*), the support width is now noticeably smaller, having been reduced from 10.9 m to approx. 7.9 m. It's important to note that full advantage is taken of the horizontal reach from the front edge of the truck to the fully supported side.

\* OSS — Assistance device for One Side Support, optional. Availability depends on machine model. Not authorized for the European Economic Area (EEA).



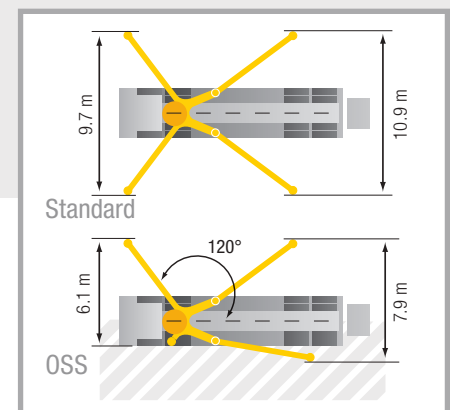


## Technical data – Placing boom

Type of folding	5-arm roll Z-folding (RZ)
Vertical reach	50.1 m
Horizontal reach	44.9 m gross
Depth of reach	35.1 m
Unfolding height	10.2 m
End hose length	3 m
Delivery lines	DN 125, max. 85 bar
Slewing range	365°

## Technical data – General

Support width*	front / rear
Normal	9.7 m / 10.9 m
OSS	6.1 m / 7.9 m
Overall length	approx. 13.6 m
Height	below 4.0 m



## The pump for more power and lower costs

Putzmeister pumps are designed for all common types of concrete, namely due to the closed loop of free-flow hydraulics. The drive transfers more power and saves resources because the oil reaches the cylinder with minimal losses. Additionally, the S tube is designed for long wear life.

Type	Output m <sup>3</sup> /h	Pressure bar	Stroke mm	Cylinder dia. mm	Strokes /min
<b>16 H</b>	160	85	2100	230	31
<b>16 H LS</b>	160	85	2100	250	26

All data represent theoretical maximum values. Max. delivery rates and max. conveying pressures cannot be operated at the same time.  
Standard boom pipework: pressure up to max. 85 bar.

Country-specific admission requirements for 4 or 5 axles must be checked.  
Dimensions are model-dependent and may vary. Gross weight depending on equipment and chassis ≤ 40 t

\* Support width including support leg with 350 mm swivel plate

# The 51Z at a glance

## ▪ Safety with no compromises

Handrails, safety switches and quality assured components according to the global Putzmeister standards that exceed local compliance.

## ▪ Efficiency

Fewer hydraulic valves, less amount of oil, lower service times and long lasting genuine wear parts.

## ▪ Robust Design

Your business is built to last — so is our equipment. A Putzmeister machine is an investment that's designed to meet your requirements and serve your customers.

## ▪ User-Friendly Operation

Control elements and remote control are designed by operators, for operators. You're in the driver's seat with simple standard operation or customizable options for you needs.



## ▪ Flexibility

Our equipment meets your applications — flexible support system with one site support, or versatile attachments and accessories. Consult our application experts to learn more.

## ▪ Service

Harmonized service cycles for all wear parts, with easy access to training and support — on site or remotely.

## ▪ Value for owners, operators and workshop managers

Unmatched resale value, high efficiency with less fuel consumption, long lasting parts, reliable service, exceptional jobsite performance, intuitive control and safe operation.

## Practical equipment and accessories

- Standard pipeline with no special pipe bends, DN 125 throughout, reduces maintenance costs
- Automatic catching of end hose when folding in the boom
- Easily accessible, large storage areas and toolbox
- Powerful flushing water pump with 160 l/min and 25 bar
- High pressure water pump (100 bar) available as an option
- EPS (Ergonic® Pump System) for high performance and efficient pumping
- EOC (Ergonic® Output Control) fuel saving system
- All operating information on graphic display
- Operator friendly Ergonic® 2.0 radio remote and control system
- EBC one touch operation exclusively by Putzmeister

Note: The diagrams in the brochure do not necessarily correspond to the full scope of standard equipment for the machines.  
Further brochures: Ergonic® 4811

# CanCrete

Canada's Exclusive **Putzmeister** Dealer

**Toronto:** 1810 Meyerside Dr., Mississauga, ON L5T 1B4

**416.749.2843**

**Montreal:** 1855 Rue Cunard, Laval, QC H7S 2C7

**514.884.0076**

**Fax: 647.776.3122**

**sales@cancrete.ca**

**www.cancrete.ca**

# Putzmeister

Putzmeister America, Inc.  
1733 90th Street  
Sturtevant, WI 53177 USA

Phone (262) 886-3200  
Toll-free (800) 884-7210  
Fax (262) 884-6338

Authorized Distributor © Putzmeister America, Inc. 2019. Printed in the USA (1/10/19) CT 4812 US  
Photos and drawings are for illustrative purposes only.

[www.PutzmeisterAmerica.com](http://www.PutzmeisterAmerica.com)

[pmr@putzam.com](mailto:pmr@putzam.com)