

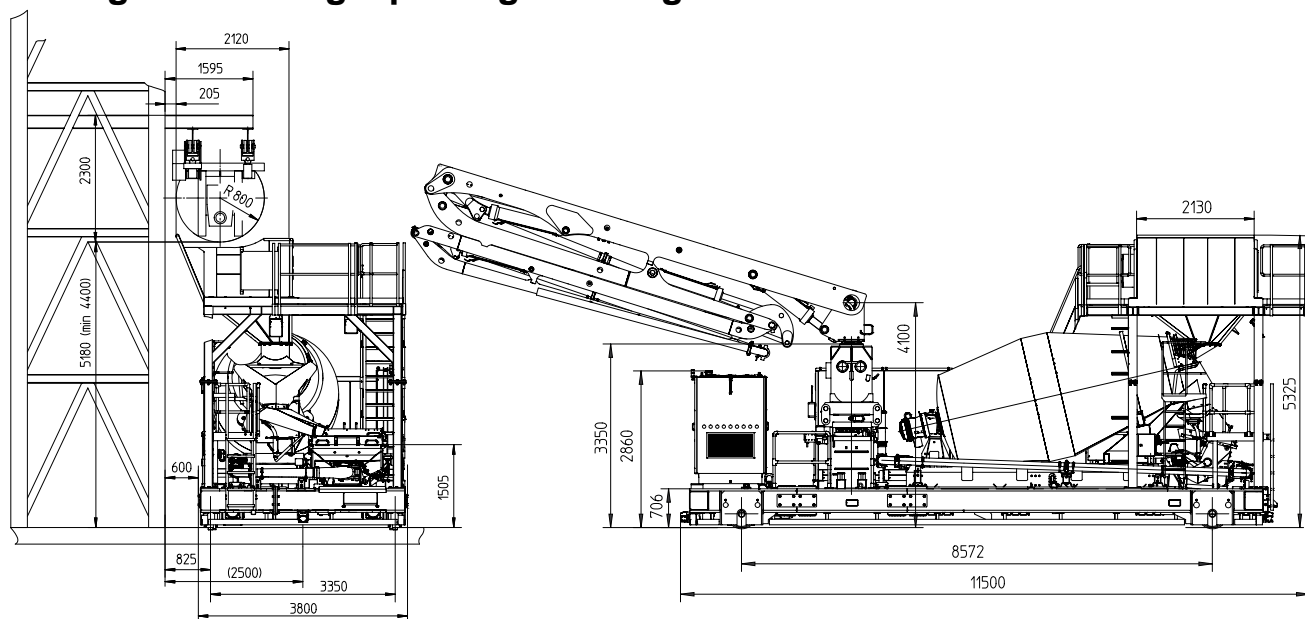
Autocor[®]

28-4.117 H / H LS

28-4.167 H / H LS

Automatic concrete placing on rail

**Mobile concrete distribution unit on rail chassis for pre-fab works
mixing – delivering – placing – dosing**



Note: Standard version. Dimensions depend on boom and base frame. Dimensions in mm
Schematic drawing of bucket conveyor. Safety clearance according to national regulations

Technical data

| Boom MX 28 | | |
|------------------|---------------|-----|
| Horizontal reach | m | 28 |
| Unfolding height | m | 7.7 |
| End hose length | m | 3 |
| Number of arms | 4 | |
| Folding system | Z fold (Z) | |
| Delivery line | DN 125 – 5.5" | |

| Tracks | | |
|--------------------|----|----------|
| Gauge of the track | mm | 3350 |
| Contact surface | mm | min. 100 |

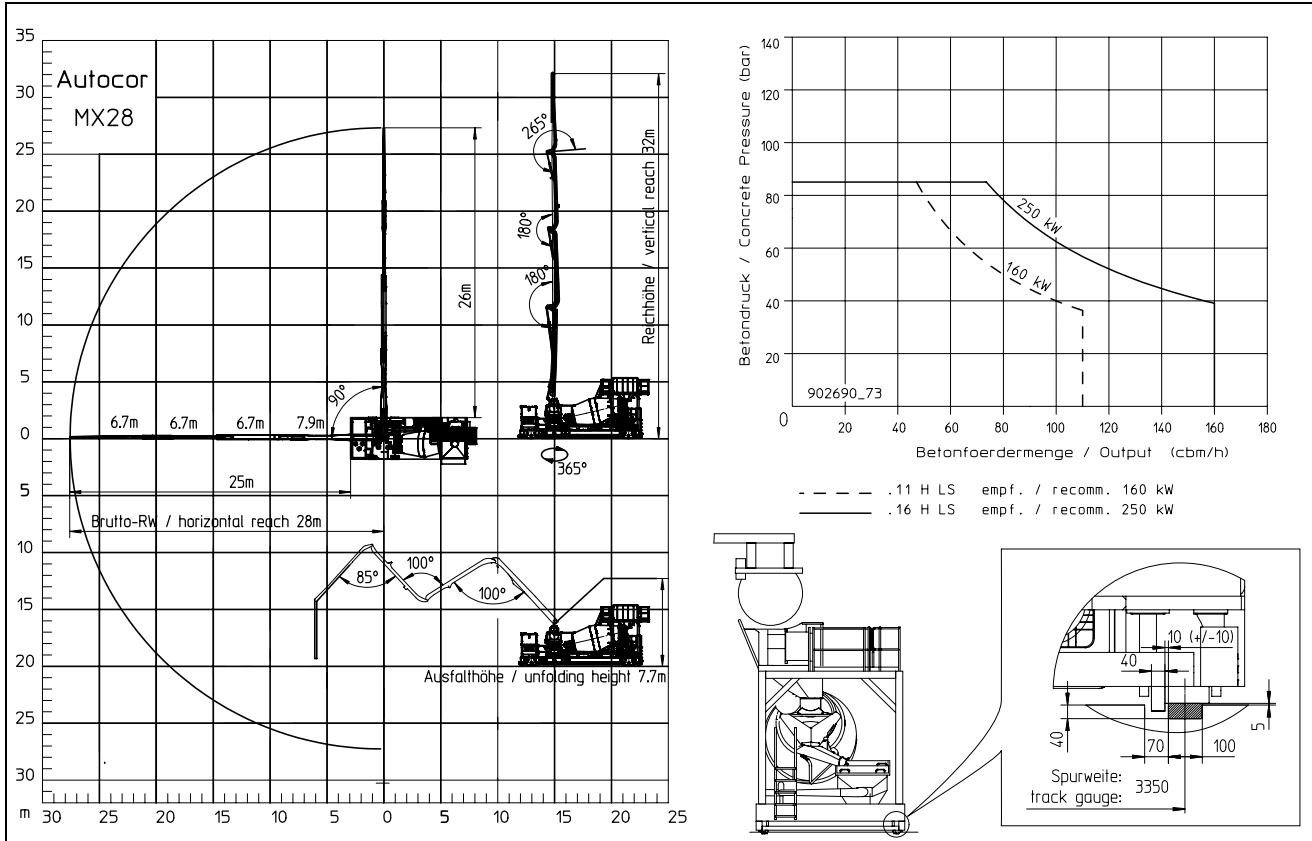
| Power supply - Cable drum or bus bar | | |
|--------------------------------------|------|------------------------|
| Bus bar 400V/50Hz | Type | V30/100 C-Phase (330A) |
| | | V30/75 C-PE (280A) |

| Pump | | .11H | .11 H LS | .16 H | .16 H LS |
|-------------------|-------------------|------|-------------|-------|-------------|
| Output | m ³ /h | 110 | 110 | 160 | 160 |
| Delivery pressure | bar | 78 | 85 | 85 | 85 |
| Strokes | 1/min | 32 | 27 | 31 | 26 |
| Delivery cylinder | ∅ mm | 230 | 250 | 230 | 250 |
| Stroke | mm | 1400 | 1400 | 2100 | 2100 |
| Hopper | RS907L | | | | |
| Hopper cover | ALU | | | | |

| Buffer Storage HTM 704 N | | |
|--------------------------|----------------|------|
| Nominal capacity | m ³ | 7 |
| Total capacity | m ³ | 11.5 |
| Drum speed | rpm | 0-14 |
| Power consumption | kW | 30 |

Maximum outputs of 110 m³/h or 160 m³/h and maximum concrete pressures of 85 bar may be achieved, but not simultaneously.
All data maximum theoretical.

Reach information diagram, performance diagram, gauge of the track



Delivery scope

Boom

- pedestal RS 850
- placing boom 28 m with 4 arms

Delivery line

- concrete line DN 125 5.5", 133x4
- end hose 3.0 m DN 125 5.5"
- squeeze valve (EQV) and compressor

Pump

- double piston pump .11 H LS or .16 H LS

Buffer Storage

- mixing drum LU 2/7 Liebherr HTM 704 N, 7 m³
- ladder, telescopic, rear platform
- automatic mixer discharge using fill-level sensor

Drive and control

- control cabinet
- drive electro-hydraulic 160 kW (11 H LS) or 250 kW (16 H LS)
- sound proofing doors
- proportional radio remote control for manual use of placing boom and pump, as well as drive of unit
- interface for the integration of the machine control system into the manufacturing process on terminal strip

Illumination

- working light, 2x for illumination pump and buffer storage

Chassis GR 55

- rail chassis, torsion-proof
- drive unit powered on 2 wheels, free-running
- movable via radio remote control, manual control panel or via switch directly at control cabinet

Transfer hopper

- with extended chute (supplied with concrete from bucket conveyor), adapted to the hall situation and safety (optional)

Hopper

- concrete hopper with agitator
- Mechanic hopper flap for emptying the concrete hopper

Safety

- agitator with safety switch-off
- emergency shut-down
- safety railings, on both sides
- redundant collision protection control (front, rear) stops the machine when there are obstacles in the way

Extras

- operating Instructions 2x and spare parts lists
- standard accessories
- painting:
 - arm assembly RAL 3020 signal red
 - mixer RAL 1227 chrome yellow
 - pump RAL 1227 chrome yellow
 - different painting on request

Optional extras

- EDP radio data transmission sender/receiver
- sensors for bucket conveyor
- recycling system for starting and ending the concreting process and for cleaning incl. washing unit
- boom central lubrication
- boom EBC control
- concrete line DN 125 5.5", 133x4, Proline 2.5 + 2
- central lubrication for concrete pump
- central lubrication of the bearing rollers for buffer storage
- by-pass filter for hydraulic oil
- hydraulic hopper flap for emptying the concrete hopper

Please see quotation for exact delivery scope.