



Putzmeister



TIER 4
FINAL
ready to work



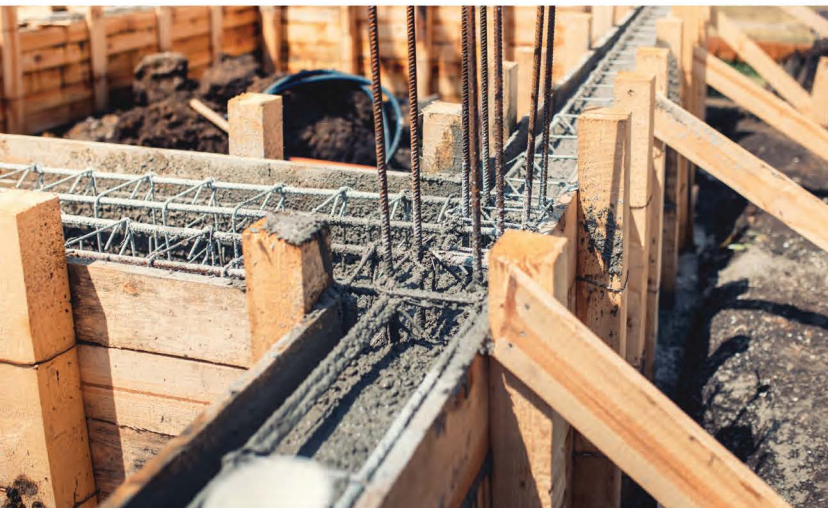
The TK 1000 series - compact innovation

Robust, cost efficient, and adaptable to your applications

The TK 1000 series - Benefits, data, features, and options

Benefits at a glance

- Compliant with Tier 4 Final
- Updated and reinforced frame
- Galvanized brackets, hood components, and frame parts to improve corrosion protection
- Fiberglass reinforced side covers and doors
- Noise reduction design
- Updated Ergonic 3 PS (pump system) with new memory function



At home wherever space is tight

The compact multi-purpose concrete pump, equipped with a Deutz diesel engine with Tier 4 Final emissions or an electric motor, is suitable for flexible use on smaller and compact construction sites - wherever space is in short supply.

Dimensions

	TIER 4 FINAL				ELECTRIC
	TK 1004	TK 1005	TK 1005 H	TK 1007	TK 1004 E
LENGTH	15' 7" (4750 mm)	15' 7" (4750 mm)	15' 7" (4750 mm)	15' 7" (4750 mm)	15' 7" (4750 mm)
WIDTH	5' 8" (1726 mm)	5' 8" (1726 mm)	5' 8" (1726 mm)	5' 8" (1726 mm)	5' 8" (1726 mm)
HEIGHT	7' 0" (2130 mm)	7' 0" (2130 mm)	7' 0" (2130 mm)	7' 0" (2130 mm)	7' 0" (2130 mm)
WEIGHT (approx.)	6,393 lbs (2900 kg)	7,385 lbs (3350 kg)	7,385 lbs (3350 kg)	7,385 lbs (3350 kg)	6,393 lbs (2900 kg)

Technical data

	TIER 4 FINAL				ELECTRIC
	TK 1004	TK 1005	TK 1005 H	TK 1007	TK 1004 E
MAX. VOLUME OUTPUT	45 yd ³ /h (34 m ³ /h)	63 yd ³ /h (48 m ³ /h)	65 yd ³ /h (50 m ³ /h)	93 yd ³ /h (71 m ³ /h)	50 yd ³ /h (38 m ³ /h)
MAX. CONCRETE PRESSURE	1,160 psi (80 bar)	1,160 psi (80 bar)	1,465 psi (101 bar)	1,230 psi (85 bar)	1,160 psi (80 bar)
MAX. AGGREGATE SIZE	1.25" (32 mm)	1.25" (32 mm)	1.25" (32mm)	1.25" (32 mm)	1.25" (32 mm)
ENGINE	Deutz TCD2.2	CAT C3.6	CAT C3.6	CAT C3.6	-
HORSEPOWER	74 hp (55 kW)	101 hp (75 kW)	120 hp (90 kW)	101 hp (75 kW)	74 hp (55 kW) 60 Hz (1800 rpm)
MAX. STROKES / MINUTE	32	45	46	46	35
MATERIAL CYLINDERS	5.9" x 39.4" (150/1000mm)	5.9" x 39.4" (150/1000 mm)	5.9" x 39.4" (150/1000 mm)	7.1" x 39.4" (180/1000 mm)	5.9" x 39.4" (150/1000 mm)
S-TUBE	S1512	S1512	S1512	S1812	S1512
VARIABLE VOLUME CONTROL	0 to full	0 to full	0 to full	0 to full	0 to full
HYDRAULIC TANK CAPACITY	12 gallons (46 L)	12 gallons (46 L)	12 gallons (46 L)	12 gallons (46 L)	12 gallons (46 L)
HOPPER HEIGHT WITH RUBBER COLLAR	4' 11" (1489 mm)	4' 11" (1489 mm)	4' 11" (1489 mm)	4' 11" (1489 mm)	4' 11" (1489 mm)
HOPPER HEIGHT WITHOUT RUBBER COLLAR	4' 2" (1276 mm)	4' 2" (1276 mm)	4' 2" (1276 mm)	4' 2" (1276 mm)	4' 2" (1276 mm)
HOPPER CAPACITY (approx.)	300 L (10.6 ft ³)	300 L (10.6 ft ³)	300 L (10.6 ft ³)	300 L (10.6 ft ³)	300 L (10.6 ft ³)

Standard features

- 2nd E-Stop
- Agitator safety switch-off (RFID)
- Automatic speed reduction at pump stop
- Central hopper lubrication, grease gun
- Chassis, Single Axle for highway, electric brakes
- Cold start system
- Concrete hopper with agitator
- Delivery pistons "LongLife"
- Display cover for control cabinet
- Hyd. Oil, HLP 46
- Level indicator diesel tank, electrical, with low level warning, visually
- Lift Points (4x)
- Low level warning hydraulic oil, visually
- Output volume control electrically
- Paint – Putzmeister yellow & gray
- Plunger cylinder cover, plastic
- Pressure connection 5" HD
- Radio remote control with output adjustment
- Remote control cable (10 m)
- Splash guard folding
- Hopper light & rubber collar
- Support legs, 3x mechanical
- Support wheel

Options

MODEL					ELECTRIC
	TK 1004	TK 1005	TK 1005 H	TK 1007	TK 1004 E
Tandem Axle for highway	✓	✓	✓	✓	✓
Skid frame	✓	✓	✓	✓	✓
Aluminum Wheels, Single Axle	✓	✓	✓	✓	✓
Aluminum Wheels, Tandem Axle	✓	✓	✓	✓	✓
Support legs, rear hydraulic, front mechanical	✓	✓	✓	✓	✓
Tow coupler, 2" ball	STD	STD	✓	✓	STD
Tow coupler, 2-5/16" ball	✓	✓	✓	✓	✓
Tow coupler, 3" eye	✓	✓	STD	STD	✓
Water pump 50 l/min 20 bar	✓	✓	✓	✓	✓
Water pump high pressure 10.6 l/min, 140 bar	✓	✓	✓	✓	✓
Central hopper lubrication electric	✓	✓	✓	✓	✓
Hard metal wear parts kit	✓	✓	✓	✓	✓
Pressure connection SK125/5.5"	✓	✓	✓	✓	✓
Vibrator	✓	✓	✓	✓	✓
Delivery pressure reduction	✓	✓	✓	✓	✓
Remote control extension cable	✓	✓	✓	✓	✓
Tier 2 custom paint	✓	✓	✓	✓	✓

Consult factory for options not listed. U.S. domestic list prices.
Prices and specifications subject to change without prior notice.
FCA - Sturtevant, Wisconsin USA.

You can rely on Putzmeister - service, parts, and training

Everything that characterizes good service

Rapid assistance, target-oriented consultation, and reliable inventory of original Putzmeister accessories and parts – all through Putzmeister America and our Putzmeister dealer network.

Designed to support you in the best way possible

We offer ongoing training courses to ensure our service technicians are fully educated, provide a vast information network as well as state-of-the-art equipment, and focus consistently on the needs of our customers.

Our service team and dealers are provided with current technical information about your machine, so that we can assist you quickly and efficiently in the event of an emergency, repairs, or preventive maintenance.

Original parts for maximum results

Putzmeister original parts are used because it is the only way to guarantee continuous certified quality. You can be assured that your machine will be able to meet tough site requirements with maximum power and output.

Premium quality and customer proximity

If your machine is experiencing problems, our service team can visit locally or take it to a local dealer. Our dealer repair shops operate in line with Putzmeister's high quality standards.

**CanCrete**

Canada's Exclusive Putzmeister Dealer

Toronto: 1810 Meyerside Dr., Mississauga, ON L5T 1B4

416.749.2843

Montreal: 1855 Rue Cunard, Laval, QC H7S 2C7

514.884.0076

Fax: 647.776.3122

sales@cancrete.ca

www.cancrete.ca

**Putzmeister**

Putzmeister America, Inc.
1733 90th Street
Sturtevant, WI 53177 USA
www.PutzmeisterAmerica.com

Phone (262) 886-3200
Toll-free (800) 884-7210
Fax (262) 884-6338
pmr@putzmeister.com