

The SANY logo is displayed in white, bold, uppercase letters within a red rectangular box in the top right corner of the page.

SANY

The model number SY39 is written in a large, bold, red font with a slight drop shadow, positioned in the upper left quadrant of the page.

SY39

The main product name is written in a very large, bold, white font with a drop shadow, centered in the middle of the page. The background of the entire page is a grayscale photograph of a concrete pump boom extending over a mountainous landscape.

**TRUCK-MOUNTED
CONCRETE PUMP**

The text 'PRODUCT SPECIFICATIONS' is written in a bold, white, uppercase font, centered at the bottom of the page against a dark gray background.

PRODUCT SPECIFICATIONS

EFFICIENCY IN YOUR FLEET

The SANY boom pumps, fully supported by Putzmeister America, combine automotive grade manufacturing with Putzmeister's industry-leading Sales, Parts, and Service teams.

A new addition to our portfolio includes the SY39RZ5. The SY39 sits on a 3-axle straight truck and can pump 200m³ per hour, making the unit one of our most powerful pumps with maximum reach capabilities. All SANY concrete pumps offer value, simplicity, reliability, and cost-effectiveness.

Toll-Free Hotline: 1-800-890-0269

Parts & Service: 1-800-884-7210

FEATURES EXPLAINED

THE NEW SYSD 11" TOUCH DISPLAY:

SYSD Touch Display makes operation more user-friendly and allows users to quickly conduct diagnostics. The SYSD provides inputs/outputs, bypasses and fault codes to troubleshoot and get your pump operational.

9



ROD SIDE PISTON SIDE SWITCH (SBU):

Logic boxes on the pump allow the operator to switch from low to high-pressure pumping with just a switch. High-low pressure changeover switch is located on the back panel.

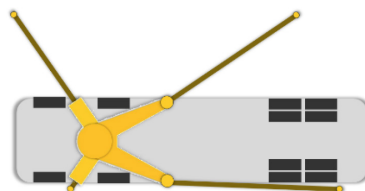
10



AUTOMATIC OSS:

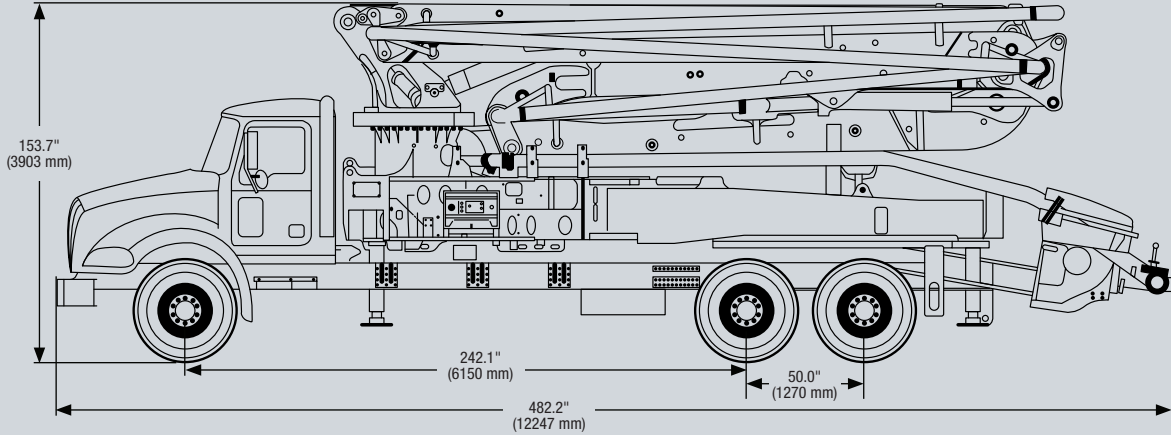
SYMC automatically estimates boom rotation area according to pump mode, outriggers, and stabilization feedback.

11



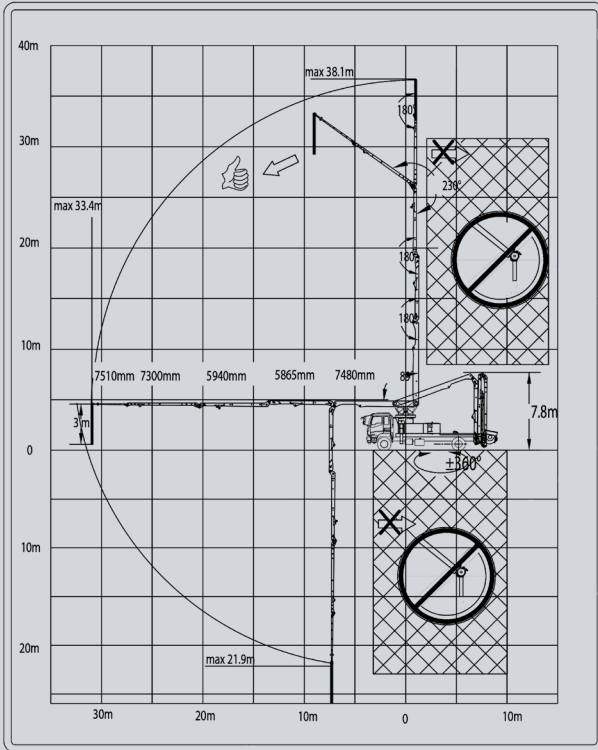
STANDARD EQUIPMENT

- 185 gal water tank
- Water pump 30 gal/min (105 psi)
- Twin wall delivery line — DN 125, 5.5"
- 3 m end hose — DN 125, 5.5"
- Concrete hopper with agitator
- Central lubrication hopper, hydraulically
- Hard metal wear parts kit
- Hopper grate agitator safety switch
- Hopper work light
- Side marker lamps
- Chrome-lined material cylinder
- SANY SYLD user interface display
- SANY SYMC control system
- Radio remote control proportional
- 2nd remote control transmitter incl. 30 m cable
- Boom pedestal (X-type outrigger and swing-out legs)
- OSS one-side support (assistance device)
- 4x outrigger pads
- Horn hopper activated via remote
- Rear step handrail
- Boom-mounted horn (manual)
- Boom not in cradle warning device
- US road approval KIT
- 12V/24V converter
- Aluminum decking
- Left and right side rear steps
- Plastic hopper cover, foldable
- Hopper grate vibrator (remote control)



SY39 RANGE DIAGRAM

SY39



MACHINE

Length	40' 2" (12.3 m)
Width	8' 6" (2.6 m)
Height	12' 8" (3.9 m)
Weight	58,248 lbs (26,421 kg)

BOOM

Boom Folding Pattern	RZ
Boom Rotation	± 360
Boom Arms	5
Vertical Reach	125' (38.1 m)
Horizontal Reach	109' 6" (33.4 m)
Unfolding Height	25' 6" (7.8 m)

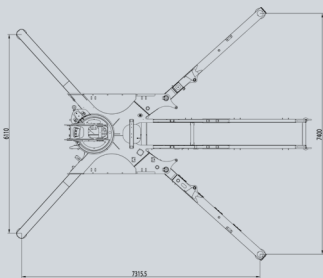
OUTRIGGER

Type of Outriggers	X Extension / Swing out
Front Outrigger Spread	20' (6.1m)
Rear Outrigger Spread	24' 3" (7.4m)
One Side Support (OSS)	Yes

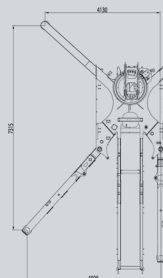
PUMP

SANY PCU model	SY-200
Main Oil Pump	Rexroth
Hydraulic System Configuration	Open Loop
Hydraulic System Pressure	4672 psi (320 bar)
Output - Rod Side	260 yd ³ /hr (200 m ³ /hr)
Output - Piston Side	180 yd ³ /hr (137 m ³ /hr)
Pressure - Rod Side	1201 psi (83 bar)
Pressure - Piston Side	1757 psi (120 bar)
Strokes Per Minute - Rod Side	33
Strokes Per Minute - Piston Side	23
Material Cylinder Diameter	10.2"
Stroke Length	74.8"

OUTRIGGER DIAGRAM



OSS DIAGRAM



HOPPER

BC38C10AM

Height	55"
Capacity	159 gal

† Technical data is based on Mack Granite GR64BR MP7 mDrive

A PROMISE OF PERFORMANCE

When you're putting together a concrete pumping fleet, it's important to work with a company that's with you every step of the way. Rest assured that when you purchase a SANY unit through Putzmeister America, Inc. you have the full backing of our company.



Supporting you 24/7

- **Customer Support and Service:** In addition to 24/7 technical support, Putzmeister has experienced Field Service Technicians available for Boom Pump start-ups.
- **Warranty Coverage:** Putzmeister warrants SANY Concrete Pumps for 12 months or 2,000 hours (whichever occurs first) after the delivery to the initial purchaser.
- **Parts and Accessories:** Customers can also purchase parts through Putzmeister America. Our in-stock inventory includes more than 20,000 parts.
- **Quality and Support:** From questions you may have before your purchase to technical expertise you need right on the job site, you're never alone with Putzmeister. Choose Putzmeister and you get more than equipment. You have a promise of performance.

SANY



Putzmeister

1733 90th Street | Sturtevant, WI 53177 USA
T: (262) 886-3200 | (800) 884-7210
F: (262) 884-6338 | sanyconcretemachinery.com